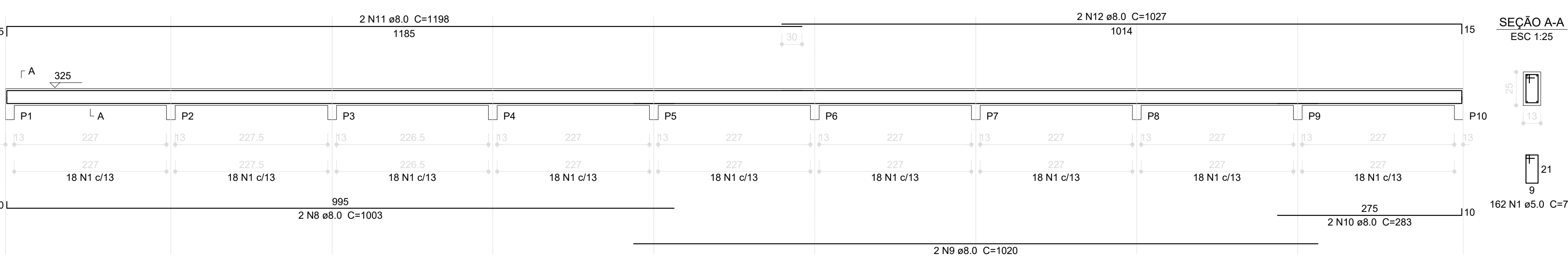


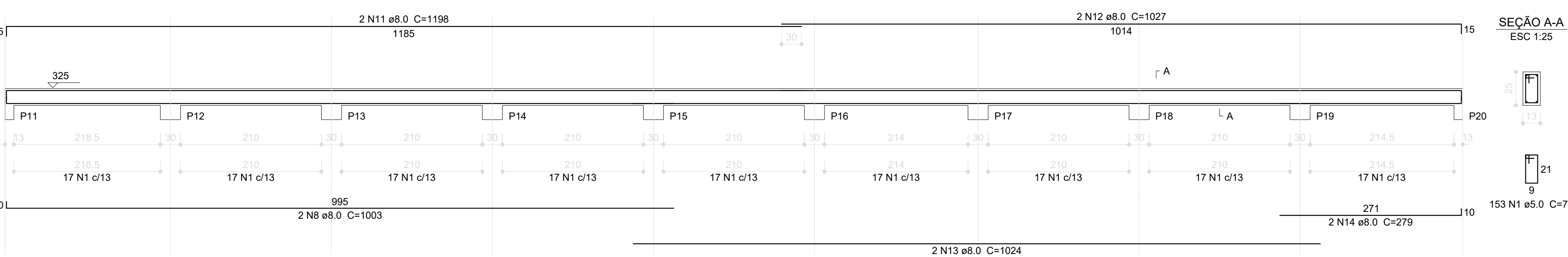
V1

ESC 1:50



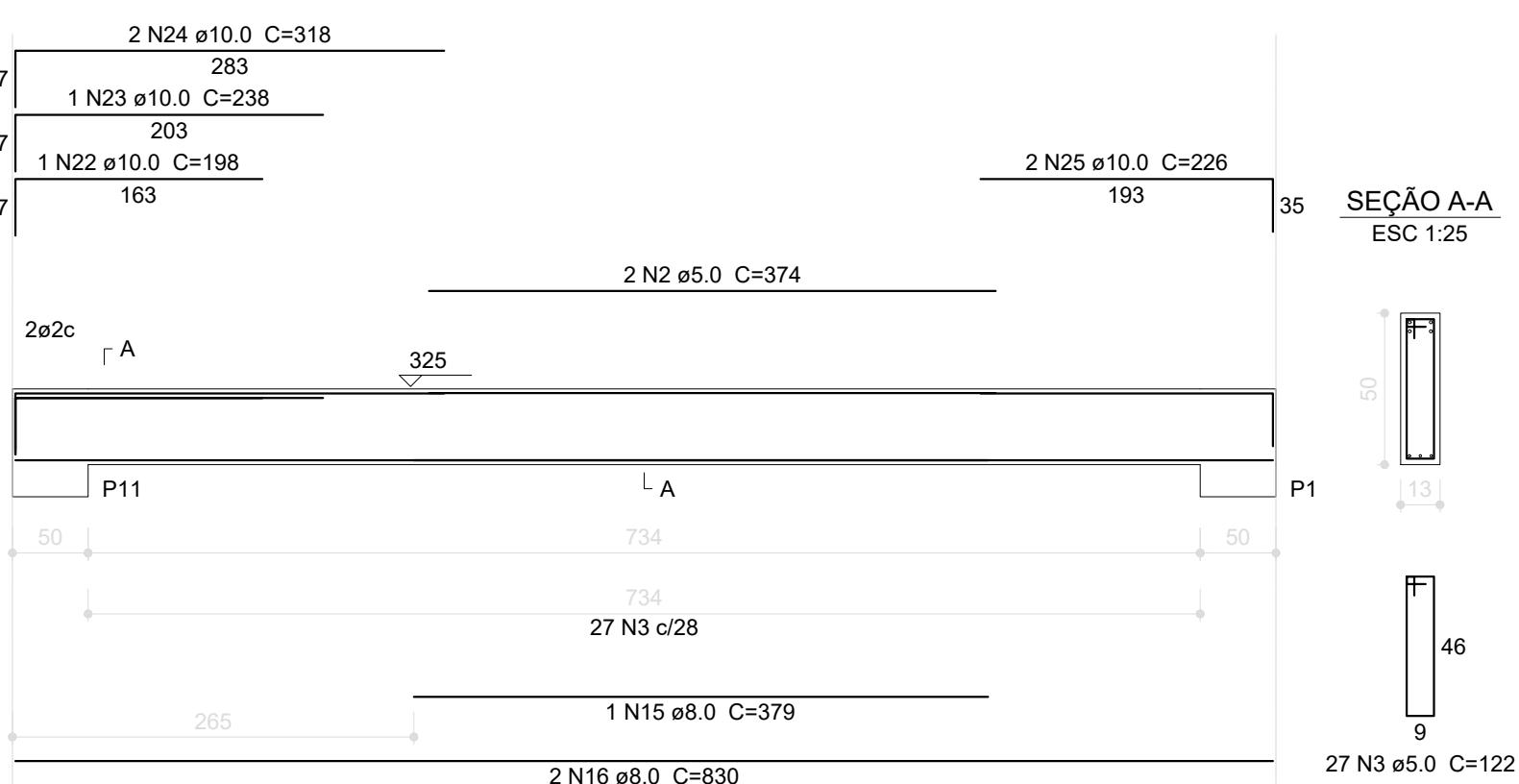
V2

ESC 1:50



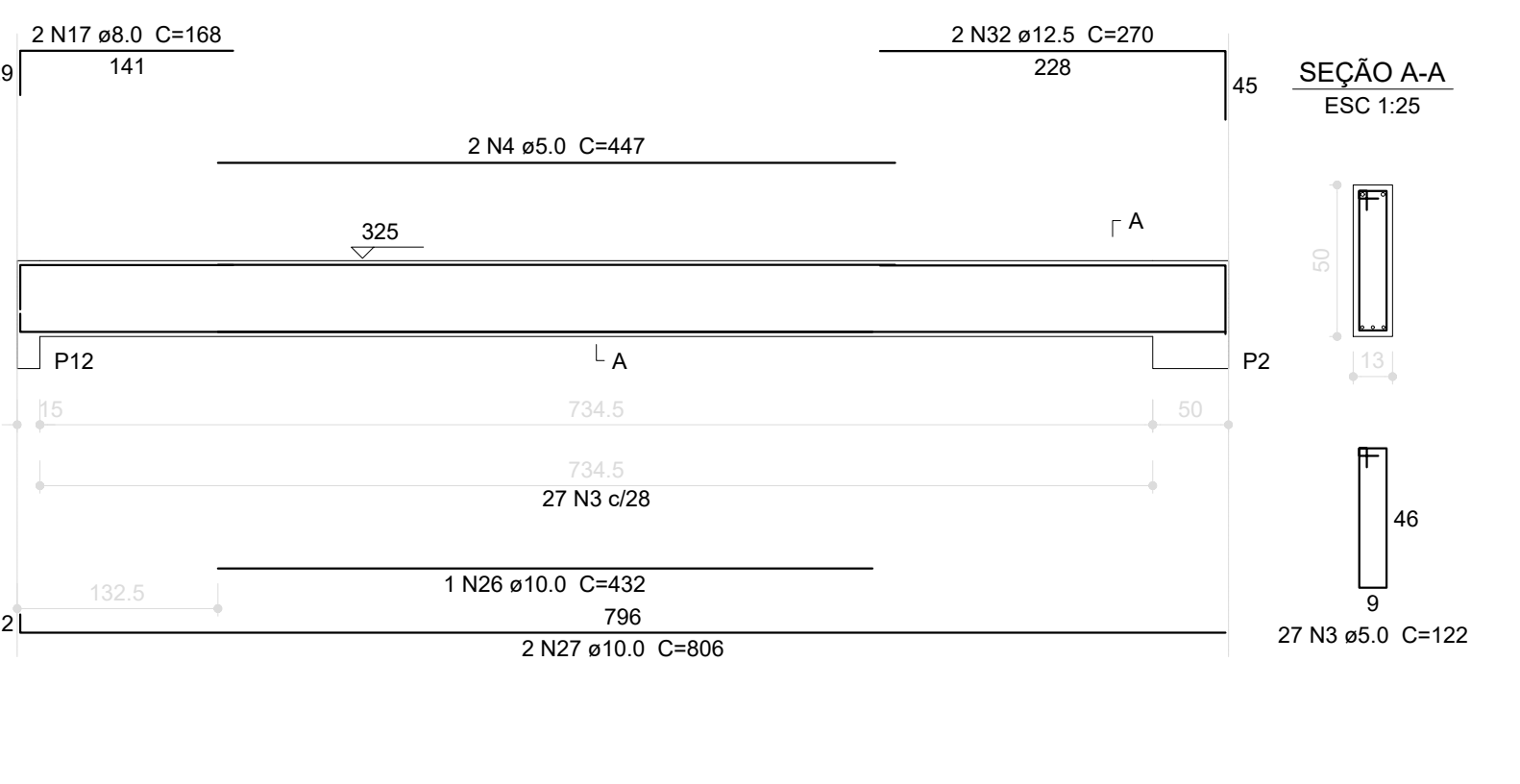
V3

ESC 1:50



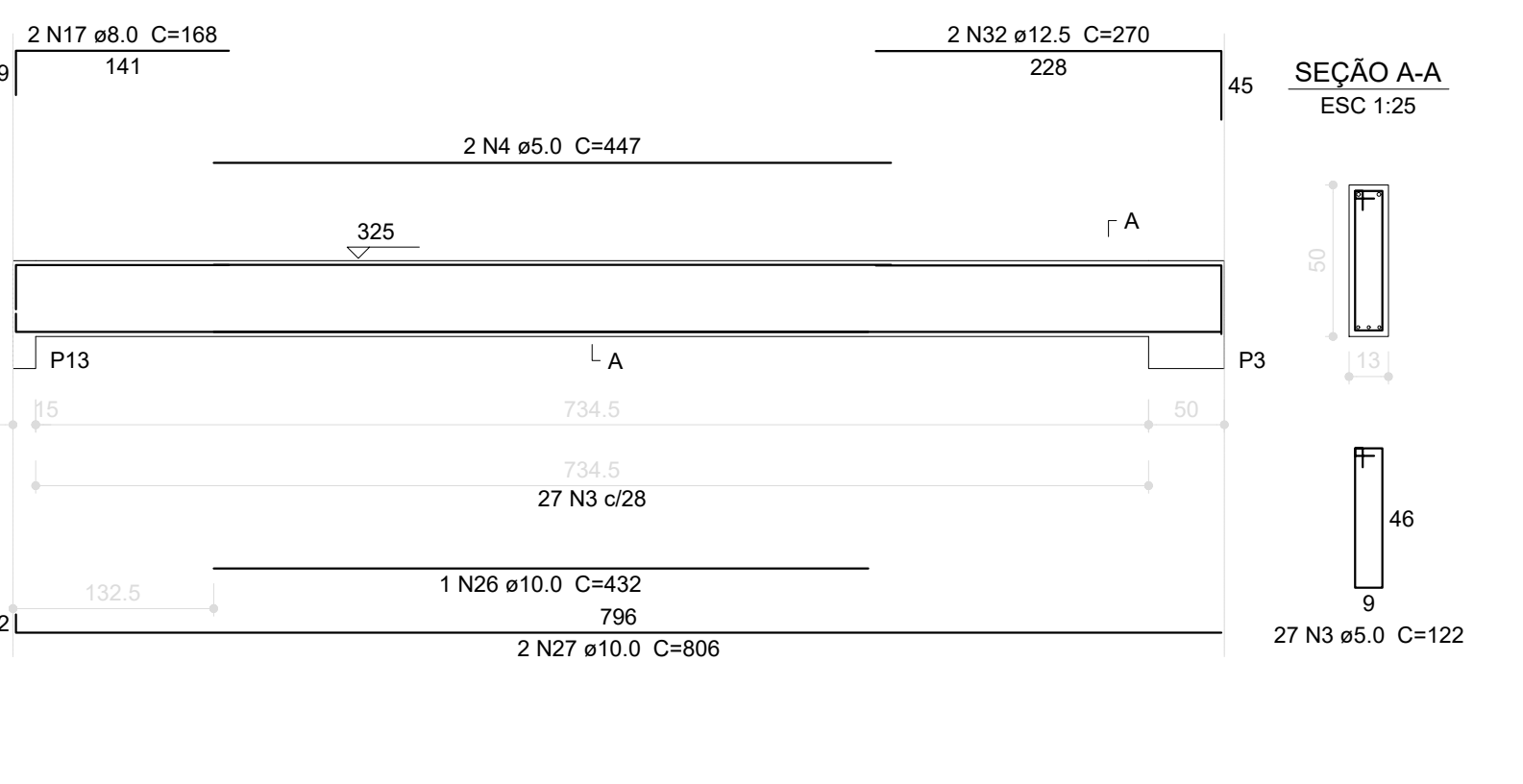
V4

ESC 1:50



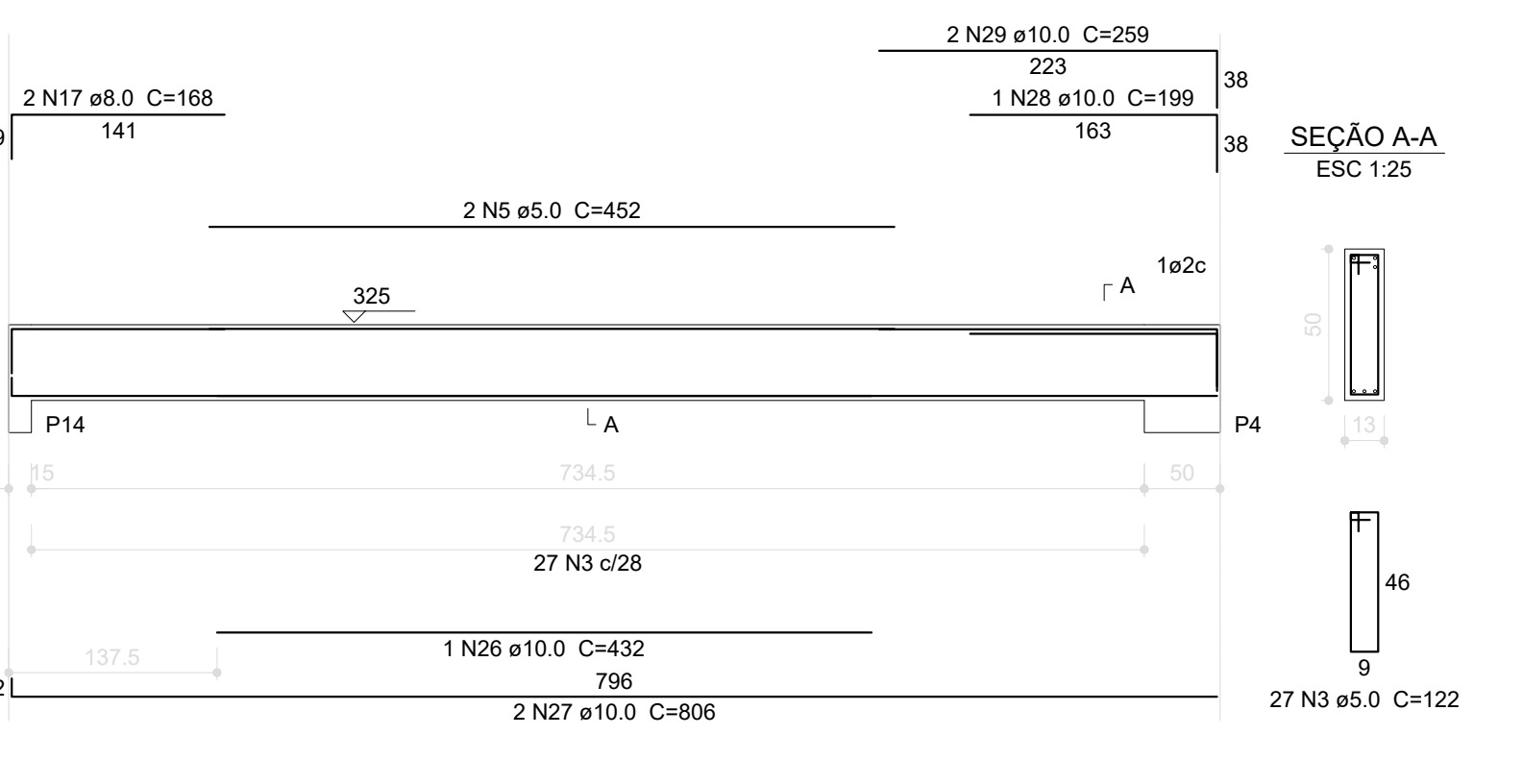
V5

ESC 1:50



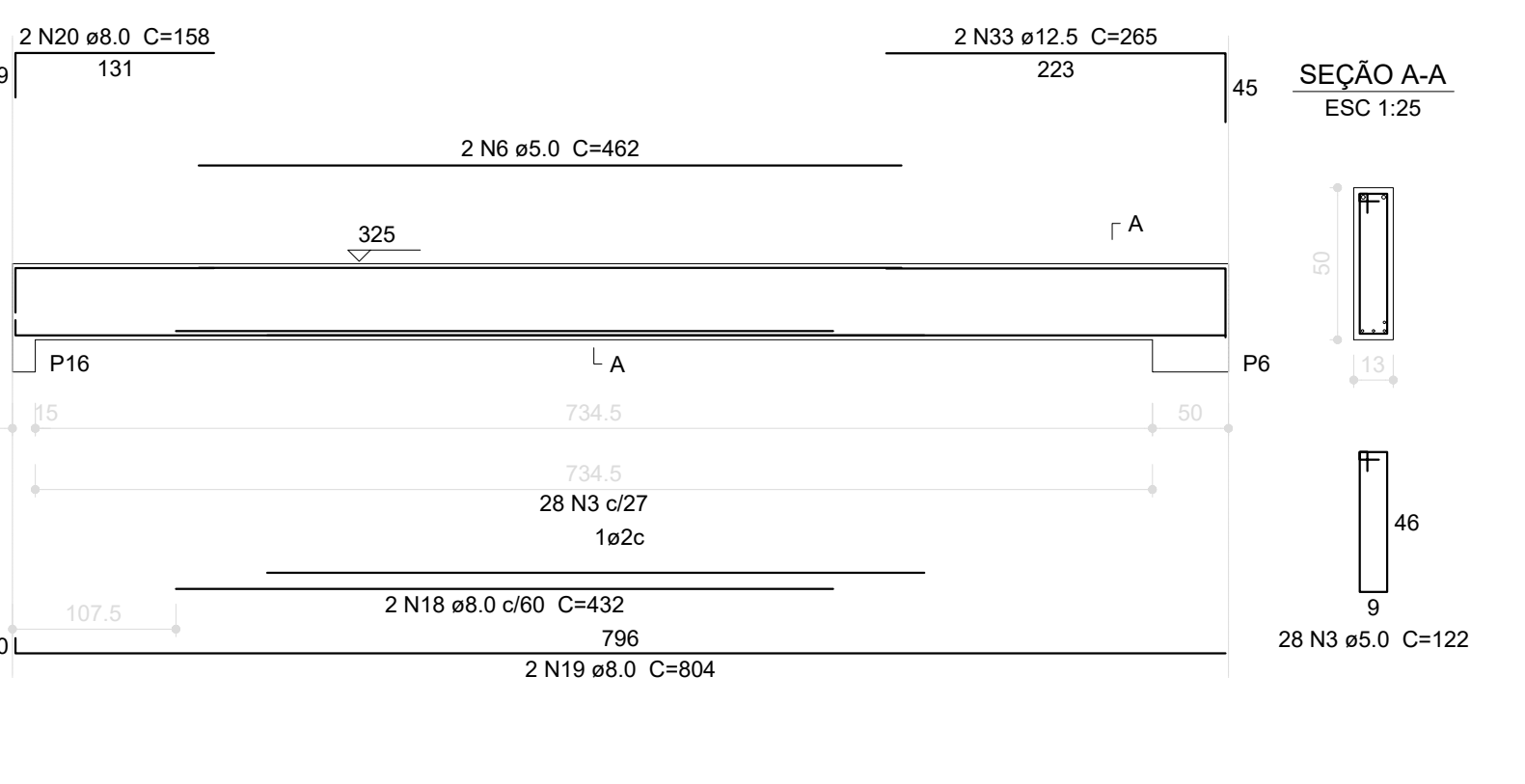
V6

ESC 1:50



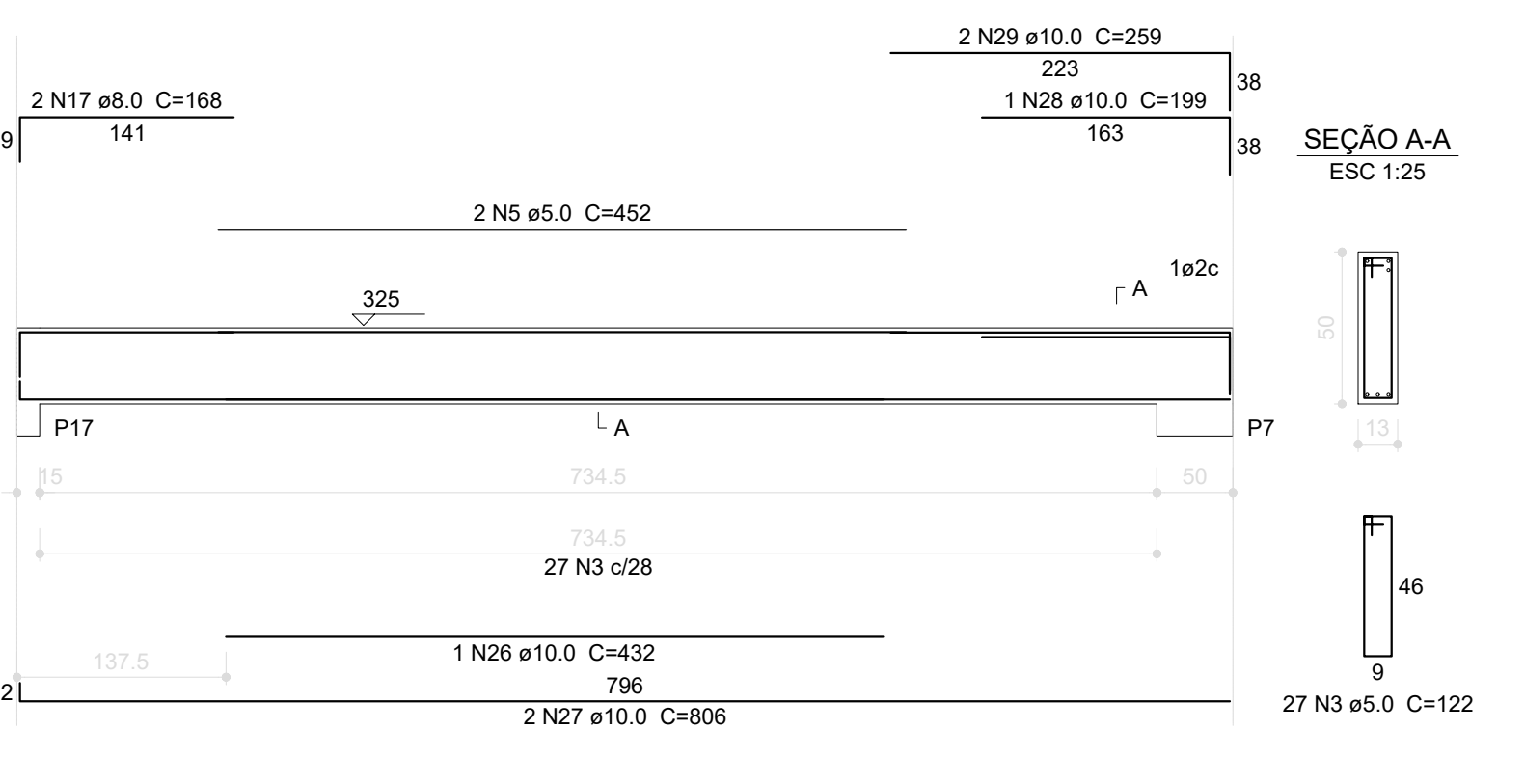
V8

ESC 1:50



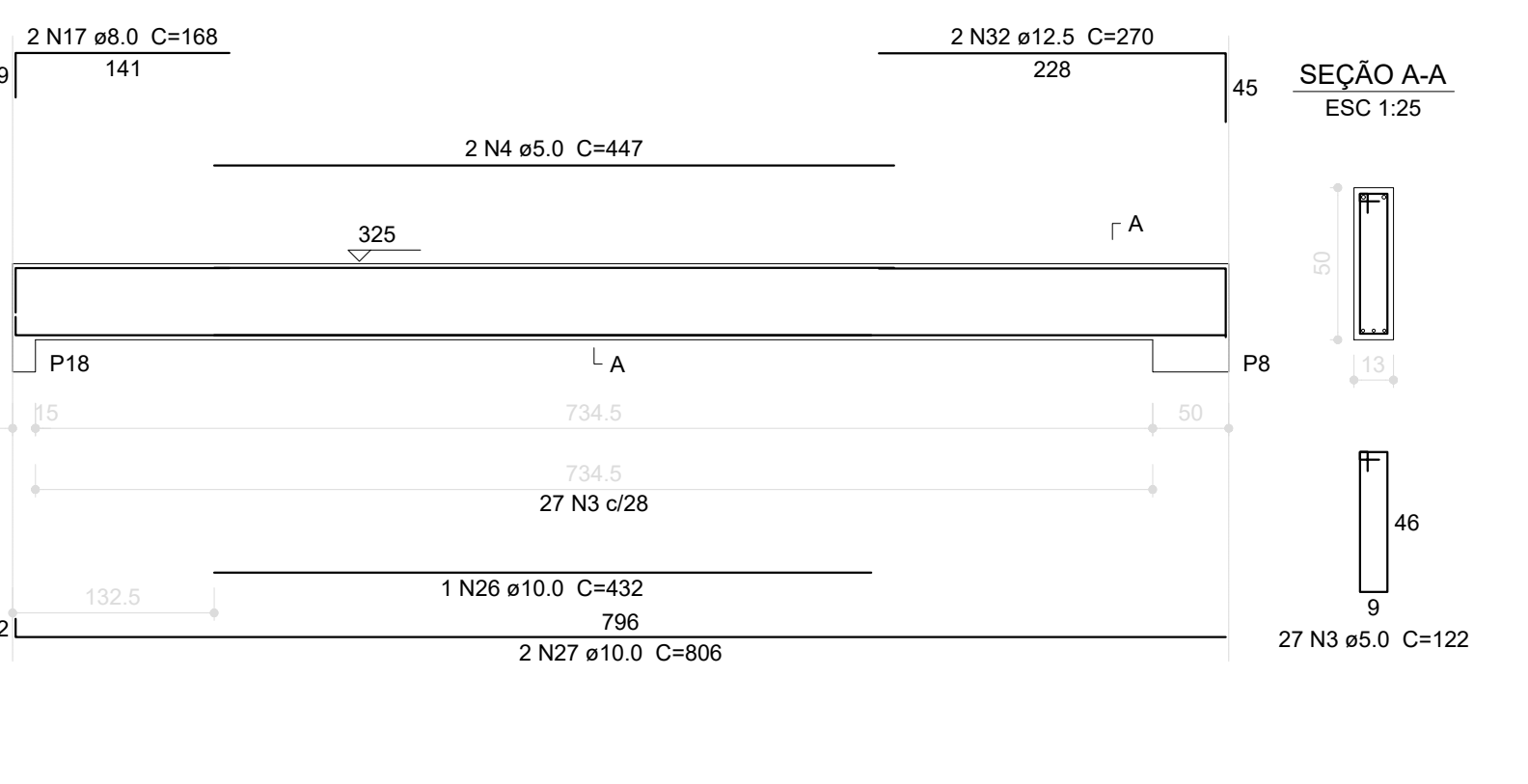
V9

ESC 1:50



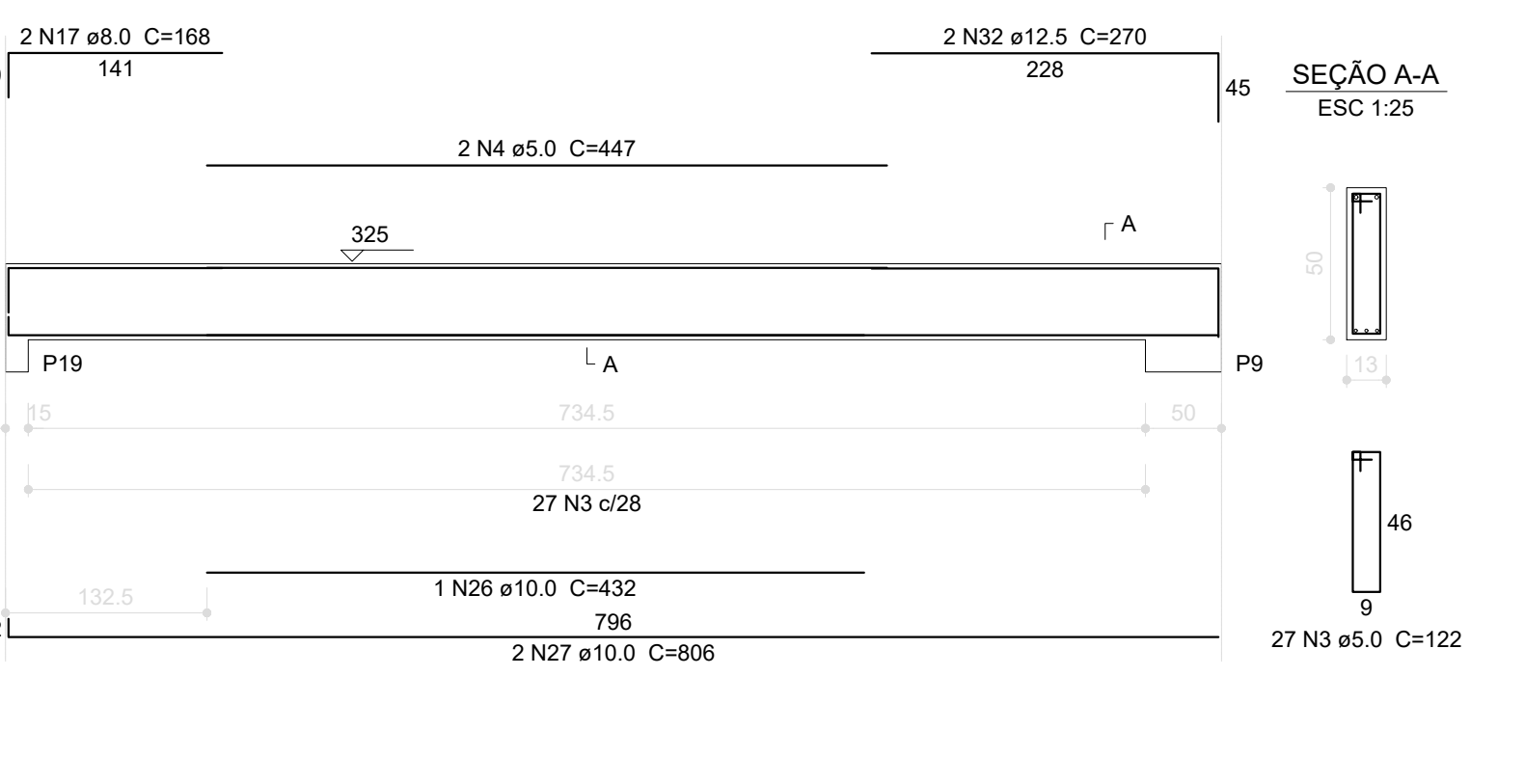
V10

ESC 1:50



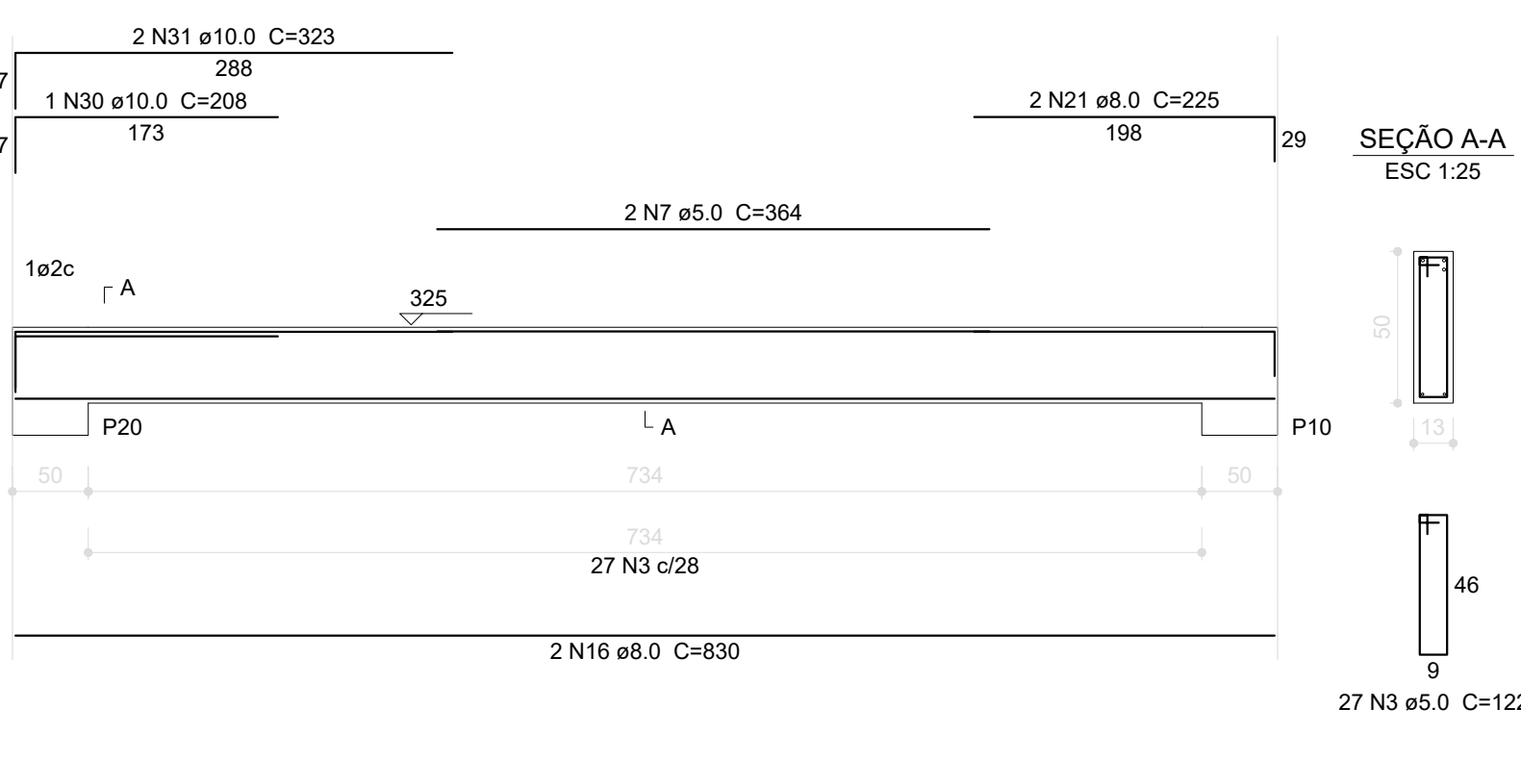
V11

ESC 1:50



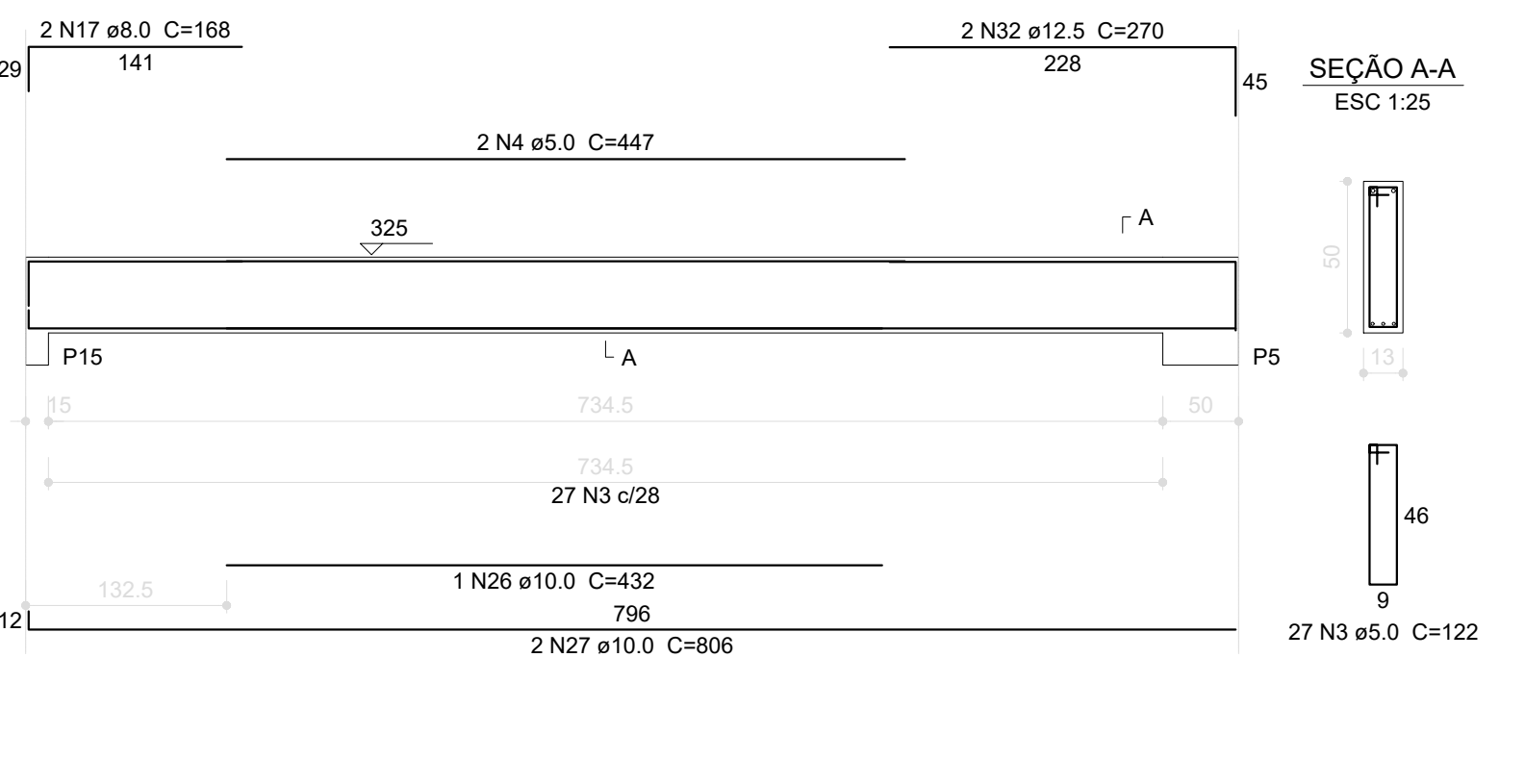
V12

ESC 1:50



V7

ESC 1:50



Resumo do aço

AÇO	DIAM (mm)	C.TOTAL (m)	PESO (kg)
CA50	8.0	274.2	108.3
CA50	10.0	181.2	111.8
CA60	12.5	32.3	31.1
CA60	5.0	644.2	99.2
PESO TOTAL (kg)			350.4

CA50 251.2
CA60 99.2

Volume de concreto (C-25) = 6.65 m³
Área de forma = 118.5 m²

1 VIGAS NÍVEL 325
ESCALA: INDICADA



PROJETO PADRÃO - FNDE

PROPRIETÁRIO: :
ENDEREÇO:
MUNICÍPIO - UF:

PROPRIETÁRIO
RESP. TÉCNICO CREA
AUTOR DO PROJETO CAU

DLFO CREA
RA

OBSERVAÇÕES:

ESCOLA 12 SALAS DE AULA
PROJETO DE ESTRUTURA

COORDENAÇÃO
CGEST - Coordenação
Geral de Infraestrutura
Educativa
BLOCO B: PEDAGÓGICO
VIGAS NÍVEL 325
SCV
REVISÃO R.03
ESCALA INDICADA
DATA EMISSÃO
MAIO/2014
PRORCHIA
11/42